



ENFORCE ASSIST
- EMPOWERING HEROES -




A new Mission Management Solution that designed by First Responders for First Responders


Enforce Assist is real-time Mission Management solution specifically designed for Search and Rescue (SAR) Teams, Emergency and Disaster Response Teams and Law Enforcement Officials. It offers a comprehensive suite of tools to streamline operations, enhance situational awareness, and ensure effective resource management across all tasks, processes and attached documents.

Watch the demo ▶


Major Benefits of the Solution




Robust platform for managing law enforcement, search and rescue, and emergency operations. Its real-time capabilities enhance situational awareness through integration with GIS mapping services, enabling features like interactive maps and live tracking. This integration ensures that all team members have access to accurate and up-to-date information, facilitating effective decision-making.




Comprehensive 360° view of all mission components, including personnel, resources, and tasks. The dynamic mission dashboard visualizes this data in real time, ensuring efficient workflow management and compliance tracking. This holistic approach simplifies the coordination of complex operations.




The platform supports extensive data and evidence management capabilities, including digital evidence collection and case referrals. This feature is crucial for maintaining data integrity, security, and comprehensive documentation throughout a mission's lifecycle.



Multi-channel communication, including SMS, chat, messaging apps, and social media. This capability, combined with AI-driven IVRs and chatbots, facilitates seamless communication across all team members and enhances coordination.



Advanced case monitoring tools that utilize configurable checklists and statistical analytics. These tools are essential for managing complex missions, ensuring all tasks are completed according to regulations and policies.



Built on a low-code/no-code platform, Enforce Assist is highly configurable and adaptable to future needs. This flexibility allows agencies to expand the system, integrate with other core systems, and connect with external agencies easily.

Using this solution, First Responders see significant improvements in multiple KPIs, such as:

40% INCREASED SUCCESS RATE

Improved situational awareness through integrated GIS mapping and real-time tracking leads to better & faster decision-making and coordination. This results in higher success rates for missions, whether they are SAR, Disaster Response, or LE.

30% MORE OPERATION EFFICIENCY

With streamlined processes and automated routine tasks, teams can respond faster and more effectively to critical incidents, ensuring quicker resolutions and better overall performance across all cooperating parties.

25% BETTER RESOURCE UTILIZATION

Optimized deployment of personnel and better use of equipment based on real-time data and predictive analytics, ensuring that the right resources are in the right place at the right time, minimizing waste, and maximizing effectiveness.

20% MORE EVENTS RECORDING

The automated event logging and real-time data capture ensures the comprehensive record keeping of all actions, decisions, and incidents, enhancing post-mission analysis, maintain accountability, and continuously improve compliance efforts.

*Some features may require additional subscription or service
For more information, please visit us at enforceassist.com

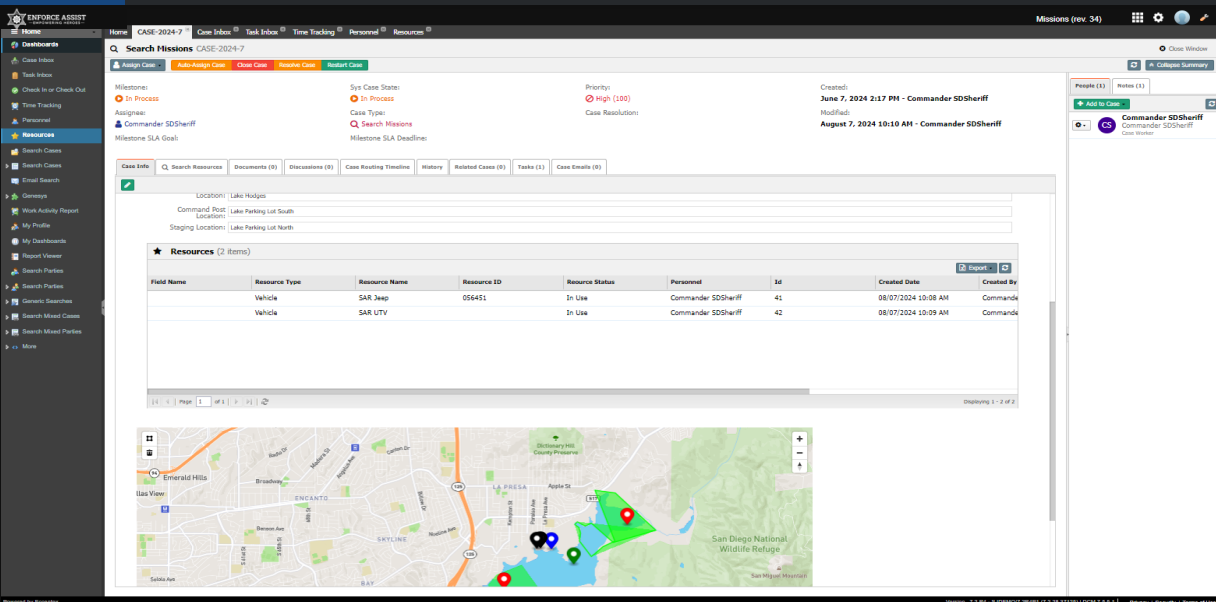
Powered by **eccentex**

© Enforce Assist Corporation 2024

Enforce Assist Solution Capabilities



A single digital platform that enable Law Enforcement, SAR and Disaster Rescue Teams to manage their critical missions from a central location. The solution embeds the management of team coordination through any digital communication channels, automate evidence collection and tracing of all personals, vehicles, gears and equipment with precise geo-location data.



Key Features

Missions Management

Personnel Management

Equipment Management

Gear Management

Firearms Management

Document Management

Task Management

Event Calendars

Time Tracking

...and many more

Embedded Mission Management

The solution embeds full-scale Dynamic Mission Management capabilities to enable first responders to define, automate, and optimize emergency responses and critical missions.

Missions Planning, Preparation, and Execution

Begin with comprehensive mission planning, preparation, and execution. Utilize detailed scheduling, precise resource allocation, and real-time adjustments to ensure mission success. Plan out every aspect of the mission, from initial briefings to final debriefings, ensuring all personnel are informed and ready.

Dynamic Teams Creation and Management

Quickly create and manage mission teams, assigning the necessary resources and personnel. This flexibility allows law enforcement and SAR to adapt to evolving situations, ensuring the right people and equipment are always in place.

360° Mission View

Utilize a full range of communication channels, including SMS, chat, messaging apps, and social media messengers. This allows team members to stay connected and coordinate in real-time, supported by AI-driven IVRs and chatbots for streamlined communication and detailed analytics.

Support All Modern Communication Channels

Our solution supports a comprehensive range of communication channels, including SMS, chat, messaging apps, and social media messengers. This ensures that team members can stay connected and coordinate in real-time, with the added support of AI-driven IVRs and chatbots for streamlined communication and detailed analytics.

Cross-Platform Integration

Seamlessly integrate with predictive analytics, third-party services such as Cal/SAR Topo, Google Maps, DMV, and other systems. This integration provides detailed real-time updates, enhancing operational efficiency and situational awareness during the mission.

Mission Monitoring

Manage complex tasks with configurable checklists, ensuring compliance with all rules, regulations, and policies. Track mission progress using robust statistical tools and analytics, which help maintain oversight and ensure every aspect of the mission is on track.

Collaboration Manager

Facilitate real-time collaboration on workflows across all team members. Efficiently manage tasks, workflow steps, inquiries, and approvals. Automate document generation and evidence management, supporting omnichannel communications to significantly improve productivity and coordination.

Subject, Suspect, BOLO Information

Maintain detailed records of missing persons or suspects, including names, contacts, physical descriptions, mental capacity, last seen points, and contact information.

Briefings and Debriefings

Conduct thorough briefings and debriefings to ensure all team members are well-informed and prepared. This feature supports detailed planning and post-mission analysis, enhancing overall mission effectiveness.

High Availability and Security

Designed for mission-critical operations to handle high volumes and demands, the system ensures reliability and performance when it matters most so that your operations run smoothly without interruptions. Additionally, it complies with the highest security standards validated by third-party penetration tests, ensuring that all mission data is protected and secure, providing peace of mind in every operation.

Real-Time Reporting and Analytics

Use built-in reporting tools to visualize case data, refer to key indicators during evaluations, and monitor missions end-to-end. This real-time insight helps make informed decisions and maintain control over ongoing operations.

ADDITIONAL SOLUTION FEATURES



ENFORCE ASSIST
- EMPOWERING HEROES -
Powered by Eccretix

Should you have any question or want to schedule a live demo contact Timur Nakonechnyy NTimur@enforceassist.com , or call (+1) 818 431 0012